



# PRODUCT CATALOGUE



ELECTRONICS FOR WOOD PROCESSING



**QR CODE**



Every product/page has its own QR code: **scan it** to visit our website and discover more!  
You will find videos, technical informations, manuals and more

# SUMMARY

02 - About us

04 - Our mission

05 - ISO 9001

## **07 - DRYING CONTROL**

08 - Selection guide

10 - DryELITE

12 - dTOUCH

15 - SteamTOUCH

16 - LiTOUCH

18 - VacuTOUCH

20 - ChipTOUCH

21 - HELIOS 2

22 - LG38NG

23 - LG38-FW

## **26 - HUMICONTROL**

## **30 - MOISTURE METERS**

34 - MoisTest Series

38 - MoisTrue

39 - MoistAPP

40 - LG38FX

44 - MoistLINE

## **48 - WIRELESS SYSTEM**

49 - WINDISK

50 - Moisture Mouse

52 - LG34 - Receiver Unit

53 - LG36 - Wireless Transmitter

## **54 - ISPM15**

## **58 - SOFTWARE**

60 - dVIEW

61 - dVIEW Lite

62 - WoodWizard2

63 - SmartHT

## **64 - ACCESSORIES & SPARE**





# ABOUT US

Logica H&S is a company operating in the electronics sector and in particular in the field of process controls and detection and measurement devices for the industrial, civil and automotive sectors.

It was founded in Udine on 15 May 1991 with the aim of offering a complete service with the support of design engineers with proven experience in various branches of industrial and civil electronics.

After an initial period dedicated only to the development of custom products (on specification and for the exclusive use of the customer), the company began the development of its own products, concentrating its efforts on electronics for wood treatment and offering them directly with its own brand. Currently, in 2023, Logica H&S boasts **almost 40 products**, divided into **7 different categories**, to offer the **best solution to any need** in the world of wood drying and processing.

The particular organizational structure of the company consists of 12 people divided into a design and a production department assisted by selected contractors. Everything is managed with a **quality system** certified according to UNI EN ISO 9001:2015. This allows extraordinary flexibility which translates into many concrete advantages for the user.

All these characteristics have made Logica H&S, from 1991 to today, a consolidated and appreciated reality all over the world in the sector of drying control and moisture measurement.

# OUR MISSION

In Logica H&S we are aware that every profession is growing day by day in complexity. For this reason, from 1991 to today, our goal is to create increasingly **reliable, intuitive and advanced electronic products**, which support the user without forcing him to acquire specific experiences in other sectors.

Our worldwide marketed drying control systems and wood moisture meters reflect this philosophy, **hiding sophisticated functions behind refined aspects** and simplified user interfaces.

In particular, we offer our customers:

- High quality products with advanced and expandable features equipped with simple and **intuitive interfaces**, to satisfy all types of users.
- A **TWO year warranty** on our products.
- A solid **after-sales service** with direct and immediate connection with the technical office (telephone/e-mail / remote assistance).
- Availability of all the necessary **spare parts**, from the single screw to the most complex electronic board (all our products, strictly MADE IN ITALY, are developed and produced internally, therefore our assistance laboratory is able to intervene directly and in a very short time).

Have a good job with Logica H&S products!

# ISO 9001

Logica H&S has strongly wanted and achieved the objective of ISO 9001 certification in 2001 and since that time, it has regularly passed all the annual inspections planned by the certification company. The company, which since 1991 has always hired a **customer-oriented attitude**, is certified to guarantee constant quality of its products and services to its customers. A Logica H&S customer can rely on:

- **mature and consolidated structure** supported by a trained, close-knit and motivated staff
- always **tested and proven products** according to strict internal written and verified procedures
- every phase and every process of corporate life is subjected to **strict control** and to careful verification so that the declared quality is in fact the same perceived by the customer
- **carefully selected** providers
- **reactive assistance service**, structured to always ensure the maximum efficiency and shorter waiting time possible

Logica H&S is currently certified according to the norm UNI EN ISO 9001: 2015 from DASA-RAGISTER, known body accredited by ACCREDIA for the certification of company management systems for quality.

# DRYING

A large industrial building with corrugated metal siding and a loading dock, with stacks of lumber in the foreground. The building has several small windows and a loading dock area. In the foreground, there are two large stacks of lumber, one on the left and one on the right, both secured with blue straps. The ground is paved, and there are some black pallets or debris near the loading dock. The sky is overcast and grey.



# CONTROL



	dTOUCH XL	dTOUCH	LiTOUCH	VacuTOUCH	SteamTOUCH	HELIOS 2	LG38-NG
<b>Kiln Type</b>	Conventional/ condensation	Conventional/ condensation	Conventional/ condensation	Continuous/di- continuous	Steaming chambers	Conventional/ condensation	Conventional/ condensation
<b>Mode</b>	Automatic / Semiautomatic	Automatic / Semiautomatic	Automatic / Semiautomatic	Automatic / Semiautomatic	Automatic / Semiautomatic	Automatic	Semiautomatic
<b>Air moisture visualization</b>	EMC - RH	EMC - RH	EMC	EMC	-	EMC	Wet/Dry bulb
<b>Air moisture probes</b>	2+	2+	2+	1/2	-	1/2	1
<b>Air Temperature probes</b>	2+	2+	2+	1+	2	1/2	1
<b>Timber moisture probes</b>	8+	8+	8+	4+	-	4	4
<b>Wireless compatible</b>	Yes	Yes	Yes	Yes	-	-	-
<b>Outputs management</b>	PID or On-Off	PID or On-Off	PID or On-Off	PID or On-Off	PID or On-Off	On-Off	On-Off
<b>Outputs</b>	10 Relays 3 Analogic	10 Relays 3 Analogic	10 Relays 3 Analogic	10 Relays 3 Analogic	10 Relays 3 Analogic	6 Relays	5 Relays
<b>Inputs</b>	4 Digital/Anlg.	4 Digital/Anlg.	4 Digital/Anlg.	4 Digital/Anlg.	2 Digital/Anlg.	-	-
<b>Interfaces</b>	RS485 Kiln Bus	RS485 Kiln Bus	RS485 Kiln Bus	RS485 Kiln Bus	RS485 Kiln Bus	RS485	RS485 (optional)
<b>Set-Up Mode</b>	30 Flexible Phases	30 Flexible Phases	30 Flexible Phases	30 Flexible Phases	30 Flexible Phases	5 Phases	Wet/Dry bulb set points
<b>HT Treatment</b>	Optional	Optional	Optional	Optional	-	-	-
<b>Built-in drying programs</b>	400+ Species Drying Expert	400+ Species Drying Expert	92	-	-	80	-
<b>Display</b>	10.1" Touch LCD	5.7" Touch LCD	5.7" Touch LCD	5.7" Touch LCD	5.7" Touch LCD	LED	LCD

# WHICH TO CHOOSE?

## SEMI-AUTOMATIC CONTROL SYSTEMS

### LG38NG

**Measurements:**  
4 Timber Moisture  
1 Wet Bulb, 1 Dry Bulb temp.  
**Outputs (On/Off)**  
Heater, Flaps, Sprayers, Fans

### SteamTOUCH

Programmable temperature controller for steaming chambers  
Touch screen interface



## FULL-AUTOMATIC CONTROL SYSTEMS

### Features:

- ISPM15 Treatment
- Energy counters
- PC connections
- Drying cycle wizard
- Steaming cycles
- Digital EMC sensors
- Wireless sensors
- Selectable wood sensors number
- Selectable climate sensors number

### HELIOS 2

Built-in probes amplifier  
5 Phases fixed  
4 MC



### dTOUCH

30 flexible phases  
Selectable number of sensors  
Compatible with Digital EMC  
Compatible with wireless sensors  
PID regulation  
Touch screen interface  
Drying programs creation wizard



### VacuTOUCH

For continuous and discontinuous vacuum kilns  
30 flexible phases  
Selectable number of sensors  
Compatible with Digital EMC  
Compatible with wireless sensors  
PID regulation  
Touch screen interface



### LiTOUCH

30 flexible phases  
Selectable number of sensors  
Compatible with Digital EMC  
Compatible with wireless sensors  
PID regulation  
Touch screen interface





# A new way of drying



## DRYELITE

### The future of control systems

DryElite is the control system that carries the concept of drying into the **cloud** era. Born from the solid foundation of the dTOUCH system, it now offers a wide number of exclusive features that make it the new benchmark for the modern dryer.

The specially designed user interface has been developed to ensure the **best user experience**, taking care to hide behind an engaging and comforting appearance an extensive list of **advanced features** in order to meet the various requirements of different types of systems and drying modes. The new **bright 10.1" capacitive display** makes DryElite usable in any situation.

Drying can take place following **optimized programs** automatically generated by the system or settable by the user, programs that can be continuous cycle or with work break intervals depending on the wood species and the user's priorities, so as to always ensure the best result in terms of quality, time and cost. Accurate results are ensured by the **extensive range of combinable sensors**, wired or wireless, which can now also be used in combination with each other to provide maximum user convenience.

*\*DryElite will be available from late 2023*





## Energy saving

Of course, there is no shortage of advanced **energy-saving features** to optimize system consumption also according to the availability and timely cost of energy, features now facilitated by the direct Internet connection on the one hand and the native Modbus interface on the other, which allows easy interconnection of the system with any sensor using the same type of interface.

## Connectivity

The ability to have all historical process data directly online, also in **graphical form**, allows easy evaluations of cycle performance even from the edge of the machine, while the availability of all information on different platforms (local panel, PC, smartphone) always maintains the same format and **simplifies the operator's life**, ensuring the same operation from wherever he is.

## App

The **dedicated app**, (iOS/Android) and the direct connection of the control system to the internet, via local network or Wi-Fi, limit the need for a local PC to only those cases where this is appropriate to manage the printing of reports or for archive management, while on all other occasions, the system can be managed autonomously.

**For the demanding  
user who does not  
like compromises**



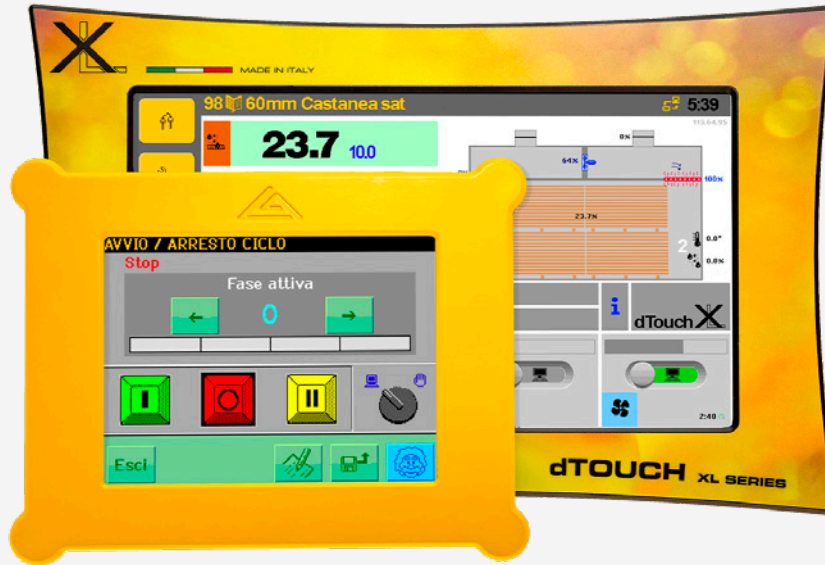
# dTOUCH

## Control System

Developed in collaboration with IVALSA, dTOUCH is a step ahead in control systems for kiln dryers, as it combines an advanced and flexible control system with the know-how of international experts in the timber drying field. dTOUCH includes a wide range of basic drying programs for over **400 timber species**, including also some special cycles, to maintain/modify the natural colour of the wood, for fast drying and so on.

dTOUCH uses this database, the information received from the sensors and the inputs from the user (such as required quality, priority to time or to quality, particular needs) to **create the best timber drying program each time**.

The creation of a customized program using dTOUCH does not more require the user to learn about drying theory and programming details (temperature, moisture, time, etc.); it is enough to "explain" to the system what are the specific requirements by answering to some simple questions and the system will create the most suitable cycle.



## Drying cycle optimization.

This function, especially useful in case of repeated drying cycles on material having homogeneous characteristics (specie, thickness, initial conditions), is used to optimize the drying cycles according to the specific kiln characteristics and to user requirements. At the end of the cycle, the user has the opportunity to answer to a few questions to evaluate the results of the cycle just completed; dTOUCH uses these informations to adjust the current cycle for the next drying.

## The friendly expert

A big effort has been accomplished to provide the best user-friendly interface. The system is based on a **5.7" touchscreen LCD** and a multilingual menu. Whenever possible, every function is identified by a icon and all selectable functions are identified by buttons or blue colour. A single tap on the screen is enough to switch from the most **complete automatic management** to the simplest semi-automatic mode, without need for any programming skill.

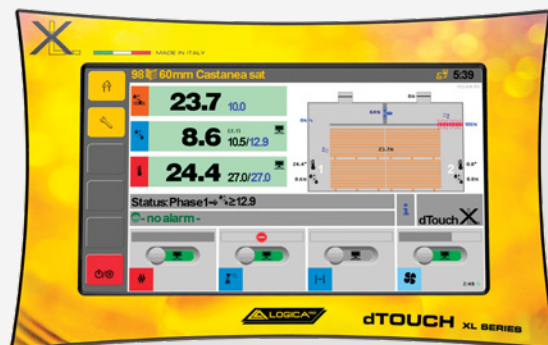
## An evolving system

With the automatic upgrade function (available when connected to a PC running dVIEW software) your dTOUCH system will take advantage of the **continuous improvements** that will be developed on this product, in a very easy and totally free way.

## The flexible solution

Being based on "KilnBus" protocol, dTOUCH is compatible with all the sensors and interfaces developed by Logica H&S. The number of probes and their typology can be configured as required to satisfy whatever control need, including interfacing to a non-conventional sensor. The **customization** possibilities are of course not limited to the hardware features: it is possible as well to customize the look of the product, from the simple logo on the screen and on the user's manuals, up to the frame and the labels on all the KilnBus devices.

*"A single tap on the screen is enough to switch from the most complete automatic management to the simplest semi-automatic mode, without need for any programming skill."*



## BIG or... BIGGER?

All the features of dTOUCH are also available in a **XL** format, which enhances the user's experience thanks to:

- **More information** on a single screen, with the 10,1" LCD display
- Improved readability, thanks to the higher resolution screen
- Higher sensibility to the user touch thanks to the **capacitive screen** technology.

**The optimal solution  
for steaming  
chambers**



# SteamTOUCH

## Control System

### Outputs

- Heating valve (proportional driving by pulses)
- Heating valve (proportional driving by 0-10V)
- Fans (clock wise and counter clock wise)
- Fans (proportional output 0-10V)
- Heating pump (or boiler)
- Alarm

### Inputs

- 2 NTC type temperature sensors (4m cable)
- External alarm input
- Heating valve feedback

SteamTOUCH is a touchscreen control system dedicated to **vaporization cells**. It allows the definition of vaporization cycles consisting of up to 30 phases; for each phase it is possible to establish temperature, speed of temperature variation, duration of the phase (which can be determined from the start of the phase or from reaching the expected temperature), as well as to specify fans speed where installed, alarm management methods, etc.

The system is also equipped with accessory functions such as **energy saving mode**, log of **alarms** occurred and measurements carried out.

SteamTOUCH can be connected to a PC equipped with dVIEW software for remote control and/or for recording reports for the treatment carried out.

A freeware version of the same software is also available (LITEview) which can only be used for remote control.

## Touchscreen control system for kiln dryers



*"Practical and intuitive touchscreen interface"*

**\*DELPHI:** The ancestor of LiTouch, discontinued since November 2022

# LiTOUCH

## Control System

Control system for traditional kiln dryers, equipped with a practical and intuitive touch screen interface.

LiTouch is the natural evolution of the well-known DELPHI\* control system, born from the fusion with the most advanced dTOUCH system. The result is an **advanced control** system that combines the simplicity of previous with the advantages of updated touchscreen interface

### LiTOUCH or dTOUCH?

This system is aimed specifically at all those who are looking for a **simple and complete** control system, who intend to use their own drying programs in particular, and who therefore do not need aids for the automatic programs creation and/or dTOUCH's extensive wood species database.

Using LiTOUCH it is possible to define even complex drying cycles, consisting of **up to 30** phases.

The adjustment methods (climate management priority, end of phase conditions) can be set for each phase, as well as the way of managing the actuators and the way of calculating the wood moisture.



**An affordable  
solution for your  
vacuum kiln dryer.**



# VacuTOUCH

## Control System

As part of touch series, VacuTOUCH uses a **special multifunction sensor\*** to control **vacuum kiln dryers**.

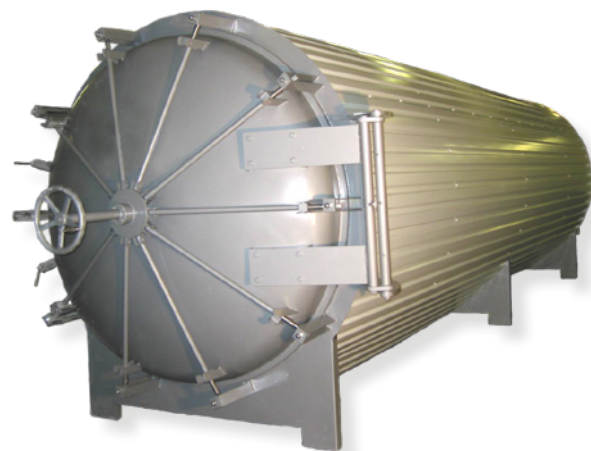
The system takes care of the whole machine management and is **highly configurable**, to adapt to single and double chamber systems, with or without condensate collection tank, with or without humidification/dehumidification systems, with a discontinuous vacuum or with heating plates.

In discontinuous vacuum systems, the transition between continuous and discontinuous operation can be autonomously decided by the controller based on the measurements taken. The adjustment is carried out by automatically varying the drying conditions (climate, pressure) according to the drying process, while maintaining the possibility of inserting timed phases where required. All devices can be controlled automatically or manually, by simply pressing the relative symbol on the synoptic. Similarly, each adjustment parameter can be calculated automatically based on the program entered, or it can be set by simply touching the displayed value.

As an option, the system can be equipped with wireless wood humidity / temperature sensors, particularly suitable for kilns with trolley loading, where the use of connection cables for the probes could be inconvenient.

**\*multifunction sensor:**  
LG35 - Wood moisture, Relative humidity, Air/wood/plate temperature and absolute pressure





## STANDARD INPUTS/OUTPUTS

Relay and analogue outputs for dampers, fans, heating .

Relay outputs for Sprayers, Alarm

Additional 2 configurable outputs for heating pump, extractor etc. Inputs for damper feedback, heating valve, fan failure, external alarm.

## CONNECTABLE SENSORS

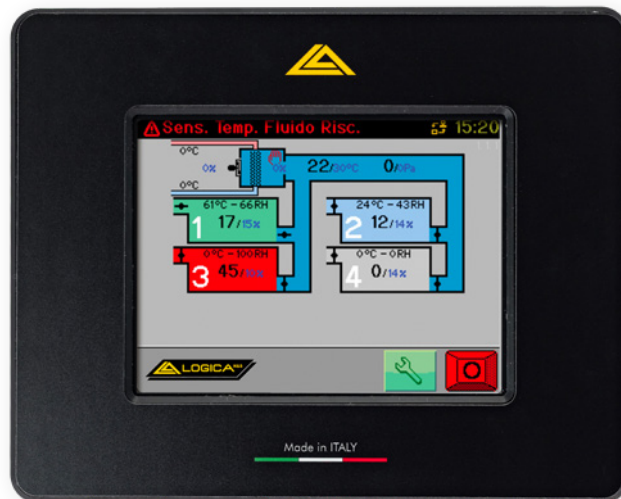
LG54 (2EMC, 2 Temperatures, 8 Wood probes)

LG35 (1EMC or digital EMC, 2 NTC temperatures, 4 wood probes)

LG55 (8 Wood Temperatures)

LG34 (wireless sensor receiver)

## The ideal solution for wood chips drying



# ChipTOUCH

## Control System

### Common Outputs

Heating valve (proportional activation by pulses or 0-10V)

Fan (proportional activation 0-10V)

Heating pump

### Outputs for each container

Drying complete contact

### Inputs

External alarm

3 auxiliary inputs

ChipTOUCH is a control system specifically developed for the drying of **wood chips** and other **biomass materials** which are usually dried by hot air insufflation. The system controls the air temperature and insufflation pressure into one or more drying containers, by activating the heating valve and the ventilators in proportional mode. The moisture of the air exiting from every container is **continuously analyzed** in order to detect the completion of the drying cycle; the final moisture target can be individually set for every container.

The system can also measure the energy consumption of the plant and, if connected to a supervisory PC, it can produce graphic reports of the drying cycles for each container.

**Entry-level automatic control system for kiln drying**



# HELIOS 2

## Control System

HELIOS 2 kiln controller is the evolution of the well-known Helios and improves the performances of its predecessor thanks to a completely reed electronics, always maintaining a very affordable price.

This instrument is particularly **suitable to control small kilns** or, generally, in all systems which is necessary to maintain a **high standard of quality and to reduce costs**: HELIOS 2 is the instrument with the **best price/performance ratio** today available on the market.

Simply by setting the desired drying program, by writing directly or by recalling it from the memory (a standard one or a program previously saved by the user), HELIOS 2 controller is able to run the drying cycle in a fully automatic way.

HELIOS 2 includes into a single sealed box (IP55) the control panel and the amplifier for the signals coming from the timber probes. For this reason, it must be placed close to the kiln, operation made easier thanks to its extended working temperature range.

*"HELIOS 2 is the instrument with the best price/performance ratio today available on the market"*

## Semi-automatic control system for kiln dryers



# LG38NG

## Semi-automatic control system

LG38 is an instrument developed to measure continuously the humidity of the timber and to control the climate inside the kiln.

It has 4 timber probes inputs whose readings are automatically compensated on basis of the timber temperature.

The climate of the cell is determined by means of two temperature probes (Dry Bulb and Wet Bulb); the WB probe must be wrapped with a cotton cloth, that must be maintained always wet (cloth and bath are not included in the supply). The temperature difference among dry and wet probes, due to water evaporation, is directly related to the cell moisture content.

LG38 is equipped with 5 relays to control the dampers, sprayers, heater and reversible fans. Supplied into a practical case suitable for panel mounting (DIN), it is the **simplest and more affordable** solution to control your kiln and survey the progress of the drying cycle.

### Suggested where:

- A Wet /Dry bulb based kiln control system is preferred
- The controller can be installed very close to the kiln
- The cheapest semi automatic control system is required

**Specifically designed  
for the fast drying of  
firewood.**



# LG38-FW

## Semi-automatic control system

LG38-FW is a control system for kiln dryers, expressly designed for the **fast drying of firewood**, characterized by an excellent price / performance ratio. Available in versions with and without wood moisture measurement, it is characterized by different control strategies that can be selected by the user, to cover all drying needs.

It is supplied complete with an RH / T sensor for measuring the climate in the cell and, as an option, with 4 sensors for wood moisture (C002998 version only). Supplied in a practical enclosure suitable for panel mounting (DIN), it is the simplest and more affordable solution to control the kiln dryer and monitor the progress of the drying cycles.



# HUMICO



# CONTROL



**Moisture problems?  
Bye-Bye!**



# HumiCONTROL

## Introduction

In recent decades, thanks to increasingly innovative technologies, the use of wood in the building sector is spreading visibly. A material that is not only natural, sustainable and energy efficient but which, if properly treated, is also safe and durable over time.

Precisely in this regard, Logica H&S has developed **HumiCONTROL**, the special system for monitoring wooden structures.

## Structural monitoring: why?

Even with proper planning and execution, it is possible that water infiltrations, leaks from pipes, condensation and other unforeseen events can seriously damage a wooden structure, causing great inconvenience and high repair costs. For this reason, it is advantageous to carry out a **continuous check** in the most sensitive points of the building (e.g. earth connections, sealing of openings and crossings, etc.) also in consideration of the fact that, in the event of an unforeseen event, the intervention time it is an essential factor to prevent the rapid destruction of the wood or the spread of fungal spores dangerous to health. And this is precisely where the HumiCONTROL system comes into play. The continuous monitoring of surfaces, in fact, was created to prevent these problems, **optimise maintenance** interventions and **increase** the useful **life and safety** of buildings.





## Tested and constantly evolving system

Used in the structure monitoring sector **since 2011**, the Logica H&S system received a boost in 2016 thanks also to the collaboration, for the Italian market, with Conlegno and Assolegno.

While boasting a long tradition, the system is **constantly evolving**: from the first installation, which only provided for the possibility of checking the measurements via a PC, we moved on to autonomous systems based on touch screens first, up to the current system, based on APP for smartphones thanks to which it is not only possible to check the status of a building remotely, but also to control various buildings (a useful function especially for construction companies) and be warned if even a single sensor should exceed the safety limits.

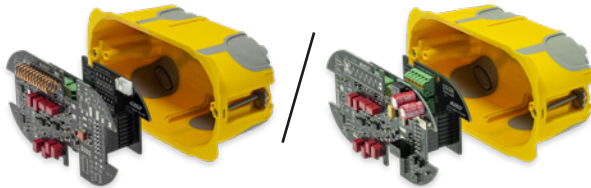
In the meantime, the choice of usable sensors has also increased, now available in different configurations, **both wired and wireless**, to best cover any monitoring need, ensuring increasingly **simple and non-invasive installations**.

# What does it consist of?



## 1- Screw electrodes

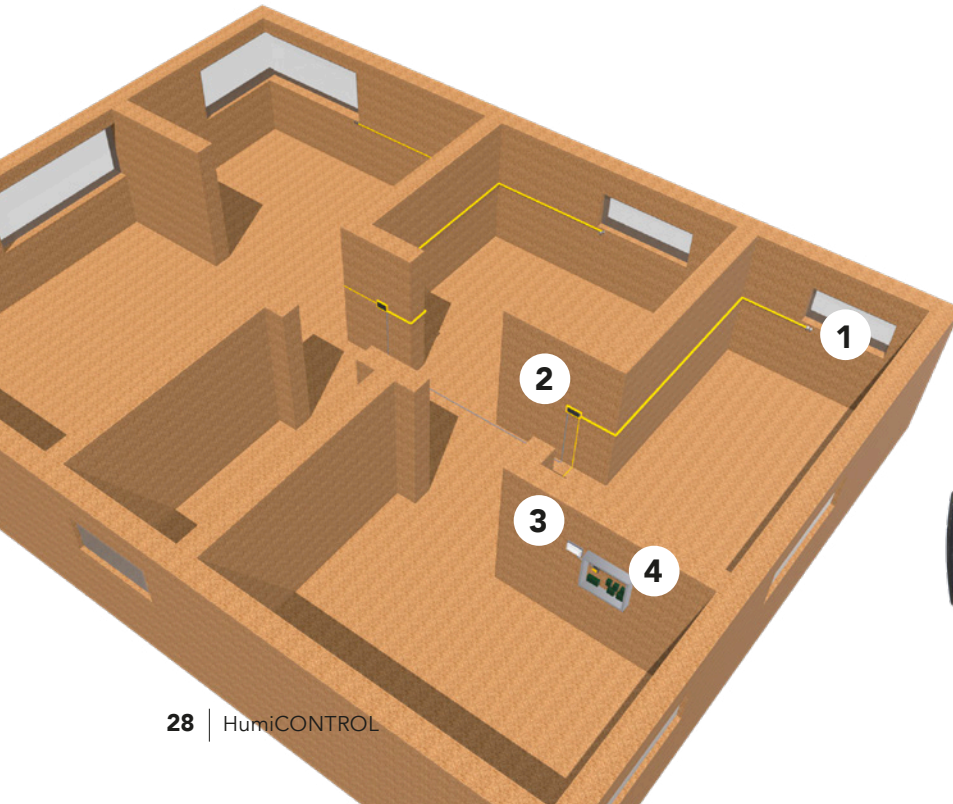
Made of stainless steel and in different sizes, the electrodes enable moisture measurement in wood



## 2- LG60-W / LG60-C

Wireless / wired version.

Measures and transmits wood and ambient moisture data



## 3- LG34 Receiver

Receives and forwards data from nearby sensors.

*\*Only in wireless version*

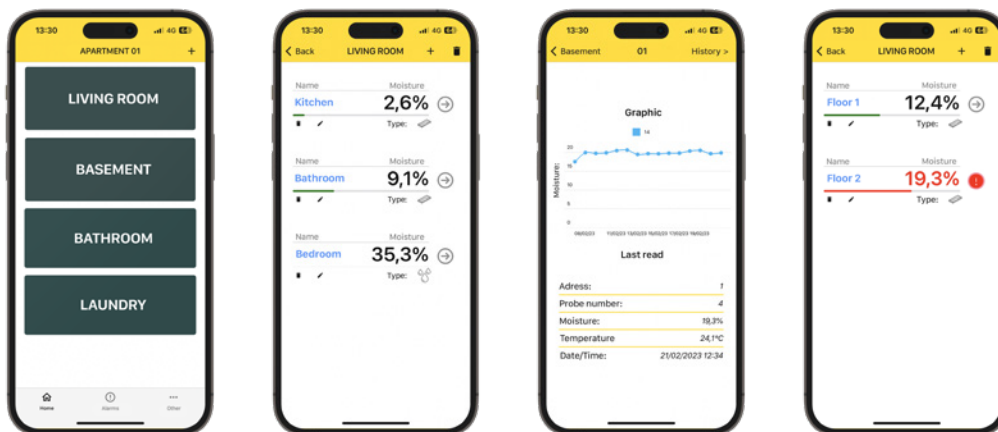


## 4- LG59

IoT gateway, sends acquired data to the Cloud.

## 5- HumiCONTROL

The special App developed for monitoring wooden structures



### HOW does it work?

After positioning the sensors (wired or wireless) in the most critical points and after connecting them to LG59 (the IoT gateway that allows you to send the measurements taken to the cloud via a common wi-fi network), the condition of the structure can be **easily monitored** by the owner and/or by the assistance service directly on a smartphone or tablet.

On the app, it is possible to assign a unique and descriptive name to every single sensor, for its **immediate location**. If the set attention thresholds are exceeded, the user will receive a notification directly on the smartphone. At this point, by accessing the App, you can not only check the condition of the entire building but also check the moisture trend over time, thanks to the historical trend of the measurements (the system records a year of measurements)

### WHY choose HumiCONTROL?

HumiControl by Logica H&S offers all the **guarantees** of a **system tested over time**, available in an unrivalled number of variants, constantly updated and supported by a company with over 30 years of experience in wood moisture measurement.

### WHERE can be used?

The HumiControl system has been specifically designed for the **building industry** (residential structures, swimming pools, museums, theatres, warehouses, sports facilities, etc.) but, thanks to the large variety of sensors available, it can also be used for moisture control in timber **storage warehouses** or for the surveillance of **wooden artefacts** of particular value (altars, paintings, etc.)



# MOISTUR







**E METERS**

# Moisture Meters



## **\*Gravimetric method:**

It is based on the comparison of the weight before and after drying to determine the moisture value.

## **\*\*Pin-Type meters:**

Measure the resistance between two electrodes

## **\*\*\*Contact-Type meters:**

Measure the dielectric characteristic of wood.

## **Why measure moisture?**

Knowing the timber moisture is a deeply felt need in all stages of processing:

- **Purchasing** of sawn timber, to verify if the material has the declared and necessary characteristics
- **Processing**, to ensure that the moisture is uniform between the various elements and compliant with the intended use of the artifact

- **Painting**, to guarantee a suitable moisture level for the process used

Even for **firewood**, knowing this allows you to calculate the caloric efficiency (and the right value) of the supplied material.

## **How to measure it?**

Although the gravimetric method\* is the only one universally recognized as a reference for an exact determination of moisture, today technology provides tools that are equally effective for most applications, but much more practical, faster and less intrusive.

To get the best results it is essential to choose the most suitable instrument based on the specific use and need. There are different types of meters on the market, divided into Pin-Type\*\* and Contact-Type\*\*\* instruments.

The Logica H&S moisture meters best covers both categories thanks to **Moi-sTrue** and the **MoisTest Series**.

## Contact or Pin-Type: Which one should you choose?

### CONTACT-TYPE METERS:

- If the material to be measured has moisture value of less than 8-10%
- If it is essential not to cause damage to the material to measure
- If you want to get quick and easy measurements

### PIN-TYPE METERS:

- If the material to be measured has moisture value of more than 20-30%
- If you suspect that the moisture is not evenly distributed
- If the measurement speed and the damage to the material are secondary to the required accuracy

## When can both be used?

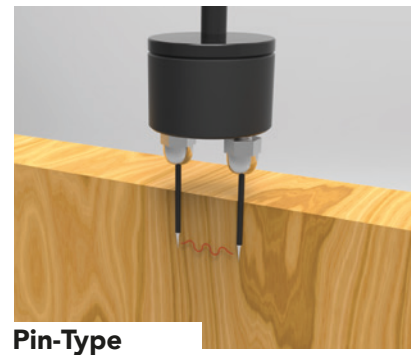
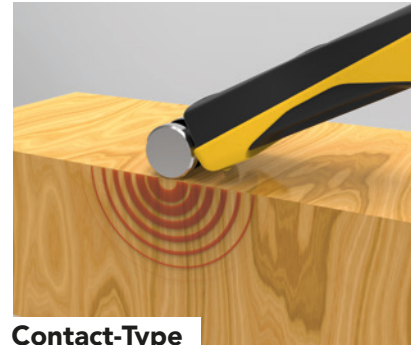
- If the moisture of the material to be measured is between 10 and 25%
- If the moisture is evenly distributed within it

## Certification & calibration

The instruments produced by Logica H&S have been calibrated on internal reference samples, which are based on measurements taken on many timber species, whose moisture has been determined according to the regulation UNI EN 13183-1:2003\*. Other timbers have been classified in analogy with tested samples. Since wood is not a homogeneous material, instruments performance cannot be automatically guaranteed on samples other than those tested, even if of the same wood species. For this reason, at the customer's request, Logica H&S can supply all instruments with the Certificate of Inspection which is made directly on the customer's wood, released by CATAS S.p.A.\*\*.

## Which one is more accurate? Which one measures deeper?

Scan the QR code or visit [www.logica-hs.it](http://www.logica-hs.it) to discover more about!



**\*UNI EN 13183-1:2003:**  
European standard which defines a method for determining the moisture content of a piece of sawn wood. This is considered as the reference method.

**\*\*CATAS S.p.A.®**  
Authorized testing laboratory



Welcome  
to the  
future



# MoisTest Series

Logica H&S proudly introduces a series of moisture meters for woodworkers, entirely designed and produced in Italy. Characterized by an extremely **handy design** and with a database of **over 400 wood species**, the instruments are the best solution for a fast and accurate, non-intrusive measure of the timber moisture.

All instruments are equipped with a **high contrast 1,8" LCD display** and include **many additional functions**, such as indication of maximum/minimum/average values, measurement hold function, settable alarm thresholds for quick selection check and history of the measures downloadable on PC to be analyzed using any spreadsheet.





## MoisTest 10



### For measuring very thin elements, such as sliced wood.

The MT10 sensor has been specifically designed for measuring moisture in timber and other elements of reduced thickness such as veneers or sliced lumber.

#### Measuring depth

Adjustable: 0,6 - 4,8mm

#### Minimum size of the sample

100 x 50 x 0,6mm

#### Size/weight

119 x 65 x 27mm / 145gr

## MoisTest 20



### Perfect for measuring on flat and regular surfaces

Thanks to the special sensor, it is particularly suitable for measuring at two different depths, a useful function for measuring moisture in thin timber or also to get an idea of its distribution inside thicker timber.

#### Measuring depth

Depth: 15 - 25mm

Surface: 8 - 15mm

#### Minimum size of the sample

100 x 50 x 8mm

#### Size/weight

119 x 65 x 27mm / 150gr

## MoisTest 30



### Ideal for measuring moisture on irregular surfaces

MoisTest30, thanks to the robust external stainless steel sensor, is particularly suitable for measuring the moisture content in elements having an irregular surface.

#### Measuring depth

15 - 30mm

#### Minimum size of the sample

100 x 30 x 15mm

#### Size/weight

150 x 70 x 31mm / 208gr

**Our most modern  
and reliable Pin-Type  
moisture meter**



# MoisTrue

## Moisture Meter

MoisTrue can be used to measure moisture content in wood, building materials, leather, etc. It is particularly suitable for measuring the timber moisture, even if the sample is not perfectly dried/seasoned, allowing to detect the distribution of moisture through the material using special electrodes with insulated stem and guaranteeing optimal stability even in the case of high values.

The compensation mode for the different timber species can be chosen between the traditional **4 groups classification** or the AS/NZS 1080.1:2012 standard, which includes over **400 wood species** individually listed and classified.

The timber moisture indication is automatically compensated on basis of the timber temperature, which can be set manually by the operator (useful when measuring timber just out from the kiln dryer) or measured by the instrument by its internal sensor or the external RH/T sensor (optional).

## What's in the box?

The standard equipment includes a plastic handle (/T **version**), for surface measurement through conductive rubber electrodes or very thin nails, a special hammer (/M) to stick the electrodes in depth or both the accessories (/TM **version**). An additional, optional, sensor (SPF) is available to measure the moisture into sawdust.

If equipped with the optional RH/T sensor, MoisTrue becomes a complete diagnostic instrument for your kiln dryer, able to measure the air temperature and relative humidity, which can be also displayed in EMC format (timber Equilibrium Moisture Content).



## Technical specifications

- Timber groups classification: 4
- Timber species classification: 480
- Over 400 wood species included
- Building material groups: 5
- Leather groups: 2

### Main functions

- Temperature indicator
- Measurement compensation
- Temperature compensation with internal, external or settable temperature
- Extended wood species library (over 400 species)

- Internal temperature indication: -10/50°C
- Log of data High/low moisture alarms
- Air temp. / RH / EMC measurement (with optional sensor)
- Auto-power off
- Battery low indicator
- USB interface
- Power supply battery: 3x AAA battery
- Battery life: 35h approx.
- Case dimensions: 32,5 x 26 x 8cm
- Weight (/T-/M-/TM): 1,3-3,0-3,5 kg approx.

# Top selling accessories

Expand the functionality of your MoisTrue with our accessories line.

## BioMASS Meter

The biomass moisture measurement accessory can be used for an easy measurement of the moisture content in wood sawdust or, more generally, in all fine-grained biomasses. The system allows you to compress the material to be measured in an easy and repeatable way, ensuring fast and accurate readings.



## Parquet laying set

A special set is available for parquetry layers , which includes the RH/T sensor (C002836) and 10 hole liners\* to measure the moisture of concrete floor slabs according to the ASTM F2170 standard.

**Compatible with:** MoisTrue, MT10, MT20, MT30  
**Code:** C002247

*\*The special RH sensor and the liners are also available as separated accessories*



## Looking for more?

You can find all the accessories at the end of the catalogue

# MoistAPP



Monitoring and archiving the moisture of timber and building materials has never been easier!

Download the app from your store and connect it to our MoisTrue meter to:

- Monitor the moisture of wood or building materials in real time
- Archive the data
- Export archives to share data
- Monitor relative humidity in real time (\*)

*\* Only with optional RH / T sensor*



**Panel instrument for  
in-line measurement  
of timber.**



# LG38FX

## In-line meter

LG38FX is an accessible solution for the automatic **in-line measurement** of wood moisture, able to create reports of the measured datas and to carry out the automatic selection of the material, discarding the elements out of tolerance. It is particularly suitable for applications where a very high measurement speed is not required and the flow of wood can be stopped for a few seconds. It consists of a panel meter, a temperature sensor (for automatic compensation of the measured values) external electrodes to be applied on a piston (not included) for the insertion of the electrodes and a PC software.

The system must be applied on a mechanical device (not included) capable of stopping the flow of wood for the time necessary for the measurement, of driving the electrodes and signaling to LG38FX the moment in which the electrodes are in position.

After the received consent, LG38FX measures the moisture of the sample, then transmits it to the PC as a ASCII, so it activates (or not) the "out of tolerance" relay. The software on the PC displays the measured value and saves it into a file that can be easily exported in a format compatible with the most popular spreadsheets.





#### INPUTS

- Power supply (230Vac)
- 1 Probe to measure wood moisture
- 1 Temperature probe
- 1 Contact measurement valid

#### OUTPUTS

- 1 RS485 serial output
- 1 "out of tolerance moisture" relay

#### TECHNICAL SPECIFICATIONS

- Power supply: 230Vca 50/60Hz +/- 10%
- Power consumption: 15W
- Operating temperature: 0/+ 40°C [32/104 ° F]
- Temperature measurement: 0-99°C [32/210 ° F]
- Temperature measurement resolution: 0.1 °
- Temperature probe: NTC thermistor (for wood moisture measurement compensation)
- Wood moisture measurement: 8-90% @ 25°C (automatically compensated based on the measured temperature)
- Measurement stabilization time: about 2"
- Relay contacts capacity: 250Vca - 5A
- Internal protection fuse: 5x20mm 5A Fast
- Product size: 144 x 72 x 154 mm



**MoistLINE**





**Our most advanced  
in-line meter**



# MoistLINE

## In-line meter

MoistLINE is a moisture meter for semi-finished products specifically designed to be placed astride a conveyor belt for in-line measurement of the moisture content of wood, **without** the need to **stop** its movement.

In addition to the sensor to be placed on the conveyor belt, the system includes an operator panel, normally installed on a pedestal-equipped panelboard, for easy positioning near the operator.

The panel also includes the power and the output unit for material selection. For maximum flexibility of use, if preferred, the unit with the outputs can also be installed separately, close to the actuators.

With MoistLINE, it is possible to **easily eliminate all faults** in production caused by the coupling of elements having too different moisture contents. With MoistLINE it is possible to set **4 moisture thresholds** (too wet, wet, dry, too dry) based on which the system will automatically categorize each element in transit under the sensor. Thanks to the outputs available for each moisture band, it is also possible to perform **automatic material selection**, marking or diverting out-of-tolerance elements.







On the display is always available in real-time, in addition to the last measurement, a statistic with the moisture band classification of all the pieces in the batch, which is very useful to establish at a glance the level of uniformity of the material being processed and thus the quality of the supply chain. From the **touch screen panel**, it is also possible to carry out initial calibration operations with a wizard, as well as to quickly recall previously made measurement presets. A unique feature of MoistLINE is the ability to **dynamically adapt the sensor height** to the thickness of the material being measured, thus ensuring that the most optimized measurement is always obtained with a single instrument. Thanks to the **Ethernet connection**, MoistLINE makes available all the data collected for each work session grouped in convenient database archives. Through the same remote connection, it is also possible to monitor the progress of the process in real-time or perform measurement system updates.

*"MoistLINE dynamically adapts the sensor height to the thickness of the material being measured"*

A close-up photograph of a wooden pallet, showing several horizontal wooden slats. The wood is light brown and shows signs of wear and grain. The text "WIRELESS SYSTEM" is overlaid in a large, bold, white sans-serif font, centered horizontally and spanning across the middle of the image. The background is slightly blurred, showing more of the pallet structure and some dark, possibly wet or stained, areas between the slats.

# WIRELESS SYSTEM





# Wireless System



## Overview

The **Wireless Sensors System** by Logica H&S **based on radiofrequency** has countless advantages, like:

**Total absence of connection cables**, consequently it is possible to move the stacks of wood or walk inside the kiln without the risk of tearing the cables, eliminating the costs of damaged parts and the time required to restore them. The **battery** inside the transmitters is **easily replaceable** by the user with a simple screwdriver, so there is no need to buy new transmitters when the batteries run out of charge.

## Where can it be used?

- Drying and/or **heat treatment cycles** into kilns driven by Logica H&S devices
- Monitoring moisture and temperature (for example in wooden houses, buildings, warehouses and so on) using the new **HumiCONTROL** system or a PC with WoodWizard2 software
- **Drying cycles** and monitoring activities through third-party systems compatible with the ModBus RTU protocol.

## What does it consist of?

The Wireless system consists of the following components:

- Receiving unit
- MoistureMouse Transmitters
- RH/T box
- WinDisk - RH/T anemometer
- Antenna with stainless steel fixing support
- Stainless steel electrodes
- Stainless steel template for inserting the electrodes

For further details, scan the QR code.



# WINDISK

## Wireless anemometer

WinDisk is a **wireless anemometer** (\*) specially developed for use in kiln dryers. Thanks to its **compact size** and the thin section, WinDisk can be easily positioned between the timbers left to dry.

Its circular shape reduces the turbulence created by itself.

Thanks to Logica H&S **development in the wind tunnel**, a dedicated micro-processor compensates the residual turbulences with the aim to obtain a very accurate measurement exactly where is necessary: over the timber.

In addition to air speed, WinDisk also measures T, RH and EMC values.

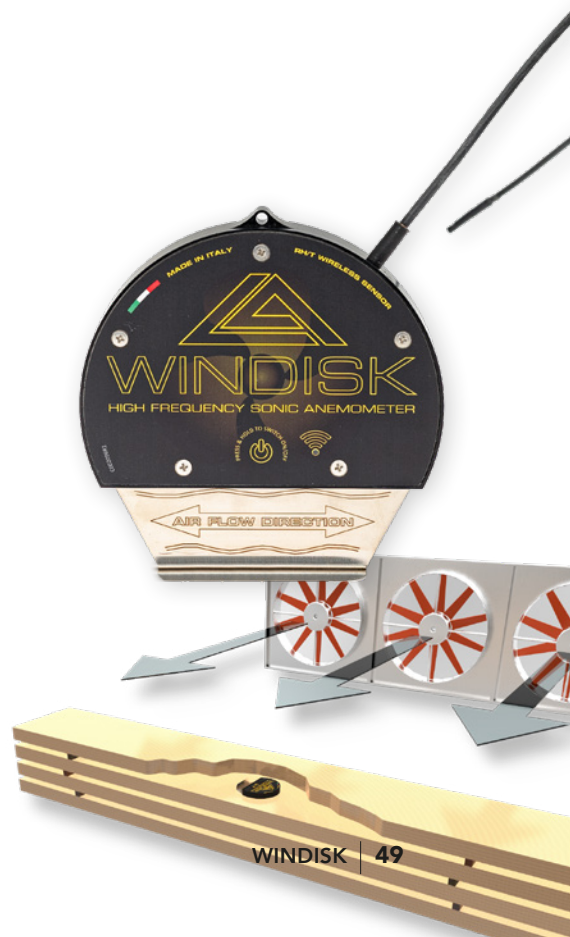
WinDisk is compatible with all other Logica H&S sensors and can be used together with MoistureMouse and (or alternatively) to LG36 box for measuring the climate inside the kiln.

\* wired available (with only anemometer feature)



Scan me

**Designed to measure  
the air flow inside  
the kiln**



Measuring wood  
moisture is easier  
with MoistureMouse



# Moisture Mouse

## Wood moisture transmitter

The MoistureMouse wireless transmitters have been **entirely designed** by Logica H&S. This process has led to exclusive solutions such as:

- **"Easy click"** system to hook the transmitter to the electrodes in a simple action
- **Thin design** of MoistureMouse, to be positioned in the middle of the stacks (minimum height of the spacers: 20mm)
- **"Air"** system, slots cut into the bottom of the transmitter, to allow proper drying of the wood sample as the rest of timber
- **Replaceable battery** avoids the need to purchase a brand new MoistureMouse unit at the end of its battery life



MoistureMouse transmitters can detect and transmit simultaneously the following data:

- Inner moisture of the wood
- Surface moisture of the wood
- Wood temperature
- Battery status

MoistureMouse transmitters are supplied with the following configuration:

- Assembled MoistureMouse transmitter with built-in battery
- Nylon cord with florescent identification plate
- Stainless steel self-drilling electrodes kit

### Technical specifications

Built-in sensors: 2 for Moisture wood (Inner and surface)  
1 for Temperature wood 1 for Battery status

Power supply: 1x 3.6V Lithium interchangeable battery

Battery life: More than 2 years in continuous use

Transmission distance: Approx. 50m in free space

Transmission interval: Approx. 30"

Transmission indicator: red led

Temperature range: -20 ÷ 85°C

### DIP Switch settings

Device address: 1 - 32

Receiver address (kiln): 1 - 8





**Receives and  
forwards data from  
nearby sensors**



# LG34

## Wireless Receiver Unit

LG34 is the heart of the system, which receives the data transmitted from all the active wireless sensors positioned into the operative range. It recognizes the kind of sensors connected and sort them on basis of their number and typology. The available protocols are KilnBus and the industry standard ModBus, suitable for connection to PLC based systems

### Technical features

Power supply: 24Vac / dc +/- 20% 2W  
Working temperature: 0-60 ° C  
Interface: RS485  
Protocol: ModBus / KilnBus selectable  
Max sensors: 40 (up to 255 sensors with FIFO polling buffer)

### Mechanical features

Aluminum case size: 171x121x55mm  
Connection via screw connectors  
Max wire section: 2.5mm<sup>2</sup>



**Measuring the climate? As easy as hanging a picture.**



# LG36 Box

## RH/T Wireless Transmitter

The LG36-Box RH/T transmitter, designed for wall mounting, is equipped with a digital sensor that does not require any calibration and is easily replaceable by the user. This sensor determines the temperature and relative humidity of the air allowing the calculation of the EMC.

The complete autonomy from the point of view of the power supply allows easy positioning of the transmitter in any point of the kiln.

The Wireless Box RH/T can measure and transmit the following data:

- Relative Humidity (RH%)
- Air temperature
- Equilibrium moisture content (EMC)
- Battery status

A photograph of a large stack of wooden pallets in the foreground, with a large industrial building in the background. The pallets are stacked in a way that shows their structure and the 'EPAL' logo. The building has a blue roof and a large glass section. The text 'ISPM 15' is overlaid in the center.

# ISPM 15





# ISPM15



## Phytosanitary heat treatment

Wooden packaging is held responsible for the serious infestations of forest parasites that have affected the United States, Canada, China and the European Union in recent years, leading to the adoption of severe and diversified control measures. With the aim of preventing the spread on a planetary scale of organisms harmful to forests through wooden packaging and standardizing the measures adopted in the various countries, the FAO defined the guidelines for the disinfection of packaging used in international trade. Among the different methods considered suitable for disinfection, there is the possibility of subjecting the material for the realization of the packaging to an HT (Heat Treatment) cycle.

## Our treatment solutions

Logica H&S is able to provide **various solutions** for HT cycles. It starts with simple systems, without active controls on the kiln, able to measure temperatures, record data and then represent them in graphical form, then arriving at **completely automatic systems** able to control the kiln and optimize the cycles, reducing execution times and consumption.

There are also automatic systems capable of conducting HT cycles and wood drying cycles. Some of these systems are compatible with the Italian regulations for HT which require, in addition to the classic measurements, the automatic verification of the reliability of the process sensors through a reference thermometer and some protection passwords concerning the processing and data recording.

## Measurement and certification systems

These systems, dedicated to users who have to perform HT cycles from time to time, do not allow direct control of the kiln dryer which must be operated manually or through external control systems. The user can then conduct heat treatment cycles through his own traditional kiln, personally setting the temperature and duration of the cycles so that the requirements of the regulations in force are met. Since there are no direct controls, it will be the user's responsibility to follow the cycle phases until the message informing the correct execution of the cycle appears on the computer screen. At this point, the user can turn off the kiln and print the report which will show all the details of the HT cycle.

## Automatic Systems

Provide the benefits of a precisely tuned cycle to meet HT requirements, resulting in substantial savings in terms of time and energy. Automatic HT cycles can be performed using our dTOUCH and LiTOUCH controllers or Smart HT control system.



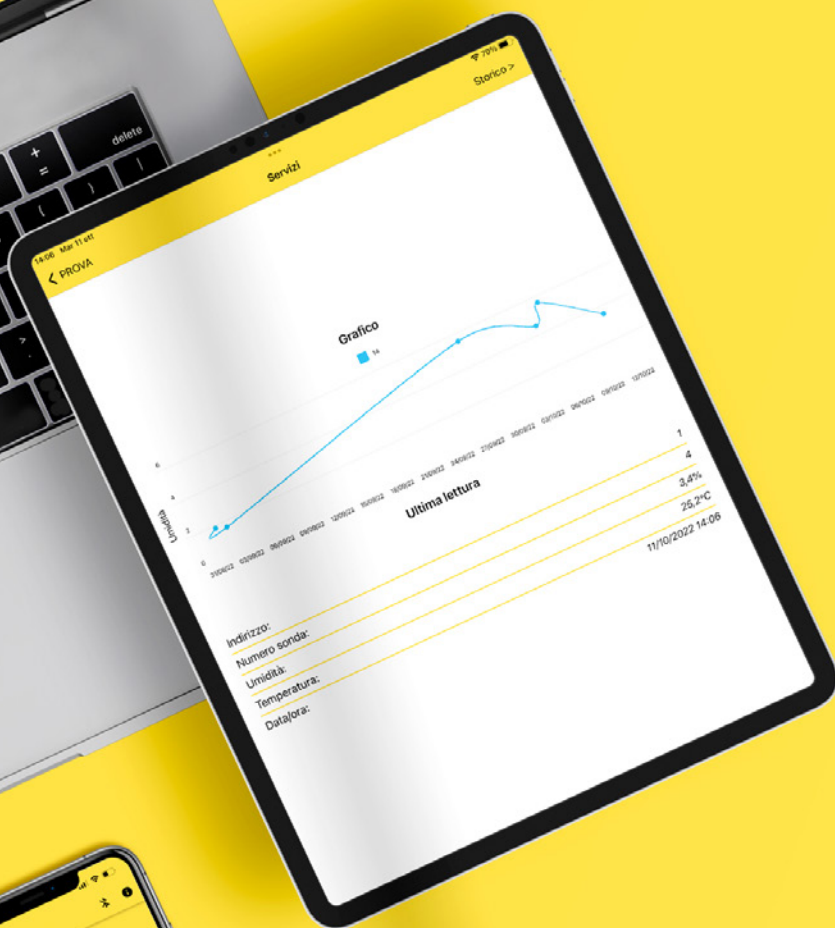
# Wood temperature probes positioning





# SOFTWARE





## The software for all the Touch series control systems



# dVIEW

dVIEW is the remote control and supervision software dedicated to the TOUCH series control systems.

Installed on a PC with Windows™ 7+ operating system, it allows you to manage all the kilns in the system from a single workstation (up to 32 in the standard configuration). A distinctive feature of the dVIEW software is that it proposes to the operator exactly the same user interface available on the local kiln's control panel: in this way, anyone who is able to operate on the panel is automatically able to use the software on the PC and vice versa: learning times are halved and productivity increases.

From the PC software the operator can perform all the operations available from the local panel; moreover the PC software is able to record the drying data during the process, representing them in table or graph format.

The software is also able to produce reports to certify the HT treatment performed on packaging materials, according to the international rule ISPM15.

Using dVIEW makes it easy to obtain the complete control of the plant through Internet, simply installing on the same PC one of the several utilities available for desktop remote management.

**A free, lite  
version of  
dVIEW**



# dVIEW Lite

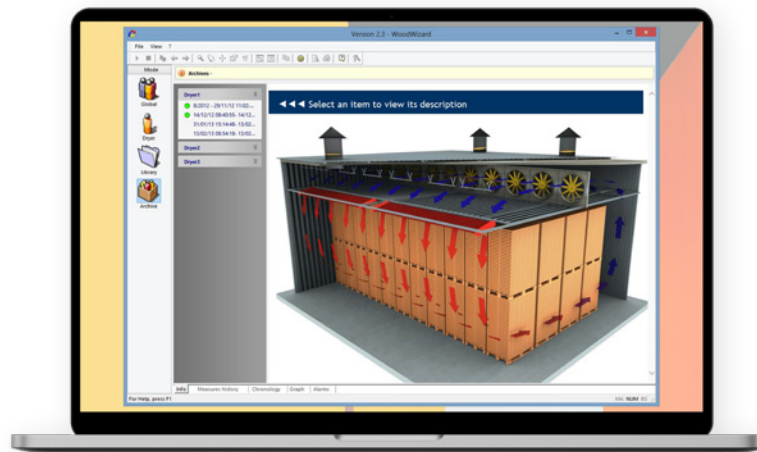
dView Lite is the freeware version of dView, the software for remote control and management specific to TOUCH series controllers.

Running on PC equipped with Windows™ 7+, it allows managing all the kilns of the plant from a single location (up to 32 for the standard configuration). As well as dView, Lite version proposes to the operator exactly the same user interface which is available on the touch panel; this makes it able to work on the PC software whoever is able to work on the local panel and vice versa: the learning curve is reduced and the productivity is increased.

From the PC software the operator can perform all the operations available from the local panel; on the opposite to the commercial version, the dView Lite version does not save or print any report about the drying cycles.

Using dView makes it easy to obtain complete control of the plant through the Internet, simply installing on the same PC one of the several utilities available for desktop remote management.

**The software for  
Helios and Delphi  
control systems**



# WoodWizard2

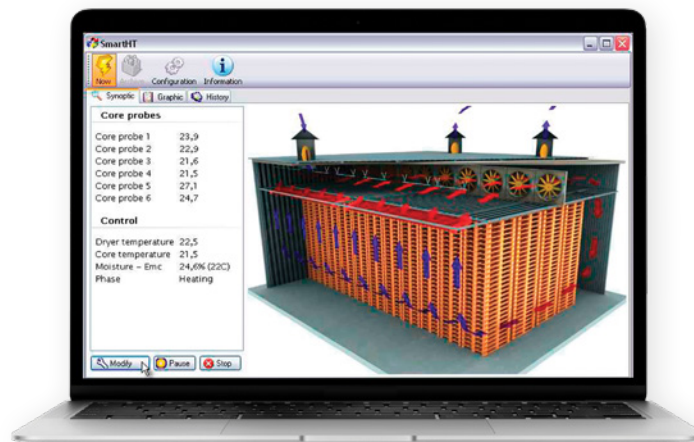
WoodWizard2 is the SCADA software from Logica H&S. Suitable to be used with Helios 2 and whatever other device based on Kiln-Bus interface. Very useful for plants having several dryers, to control and survey in real-time all the kilns and to produce HT treatment certificates.

In addition to the acquisition of the data of the process, including measured data, the software keeps and history of the alarms occurred and user operations. Using WoodWizard2, the drying programs can be saved on disk to be used later or transferred to other controllers.

The plant surveillance can also be made from a remote PC connected to the local one through Internet, using common utilities for the remote PC control. Based on Windows 7 or later, the same PC running WoodWizard2 can be also used for common office needs: the software collects the data also while the main WoodWizard2 window is closed and, if an alarm condition is detected, automatically opens the main program window.



**Expressly developed  
for timber HT**



# SmartHT

Simplified software for heat treatment.

SmartHT is a PC software capable of producing HT (Heat Treatment) certificates based on the requirements of the IPPC-FAO.

SmartHT makes your PC capable of reading up to 16 temperature probes and, if combined with the LG39 power unit, transforms it into a complete control system for your kiln, capable of controlling both temperature and humidity in the cell.

Available in the version with temperature measurement and reports production only (SmartHT Basic) or in the complete version which also allows kiln control (SmartHT control), it is particularly suitable for systems where there is a single treatment kiln and where it is not required to also dry the material.

The system has two room temperature sensors (one of which can be used as a wet bulb for determining humidity) and 6 wood temperature probes (another 8 available as an option).

## ACCESSORIES FOR DRYING CONTROL



### Compact electrode holder

Lightweight and compact size (Ø45X16mm), made of high resistance plastic material (POM) and equipped with two stainless steel electrodes with 15mm tips, cable with silicone insulation and banana plugs. It is suitable to be fixed manually in relatively soft materials (for example it can be used to detect humidity in cardboard sheets or tubes).

- Code: **C001955** - Electrode holder with two stainless steel electrodes, cable gland, banana plugs, silicone insulated cable - length 5m \*
- Code: **C001954** - Electrode holder with two stainless steel electrodes, cable gland, banana plugs, silicone insulated cable - length 10m \*

\* Other cable lengths available on request



### Spare parts for electrode holder

Special high-strength turned electrodes made of AISI304 steel with double-sharpened tip measuring 15x2.5mm and M6 thread suitable for use with C001937.

- Code: **C002040** AISI304 Turned Electrode tip 15x2.5mm + M6 \* thread

\* Sold in practical packs of 10 pieces



### Straight electrodes for moisture measuring

Series of AISI303 stainless steel electrodes with Ø 4 mm hole for banana plugs, suitable for measuring humidity in wood.

For a longer life, it is recommended to drill a guide hole with a diameter slightly smaller than the diameter of the electrode (4 mm) to facilitate its insertion (The hole must be drilled with a low-speed drill, to avoid heating the wood ).

- Length 15 mm x 20pcs - Code: **C000009**
- Length 25 mm x 20pcs - Code: **C000010**
- Length 40 mm x 20pcs - Code: **C000011**



### Non-insulated electrodes for moisture measuring

Series of AISI304 stainless steel electrodes with Ø 4 mm hole for banana plugs, suitable for measuring humidity in wood.

The insertion and extraction in the wood are facilitated by the thread of the electrode which can be quickly positioned using a common screwdriver.

- Length 15 mm x 20pcs - Code: **C002743**
- Length 25 mm x 20pcs - Code: **C002744**
- Length 40 mm x 20pcs - Code: **C002745**

## Insulated electrodes for moisture measuring

Series of electrodes in AISI304 stainless steel with Ø 4 mm hole for banana plugs, suitable for measuring the humidity in the wood core in the event that the surface layers are more humid.

The insertion and extraction in the wood are facilitated by the thread of the electrode which can be quickly positioned using a common screwdriver.

**WARNING:** A guide hole must be drilled in order to avoid damaging the insulation

- Length 25 mm x 20pcs - Code: **C002848**
- Length 40 mm x 20pcs - Code: **C002849**

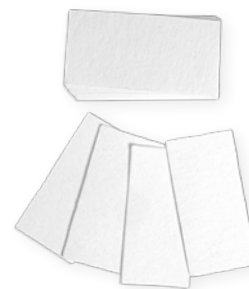


## Standard cellulose plates

Cellulose plates suitable for measuring the equilibrium humidity inside the cell. They correspond exactly to the calibration specifications required by our controllers. production.

**WARNING:** the characteristics of cellulose differ from manufacturer to manufacturer; it is strongly recommended to use original spare parts.

- Pack of 50 pcs - Code: **C000498**
- Package 100 pcs - Code: **C000499**



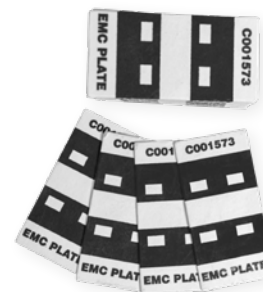
## High performance cellulose plates

Cellulose plates suitable for measuring the equilibrium humidity inside the cell. They correspond exactly to the calibration specifications required by the controllers of our production.

Compared to the standard version, these plates offer greater sensitivity to low humidity levels and better reliability thanks to the silk-screened contact strips

**WARNING:** these plates are only compatible with the TOUCH series and Delphi control systems. For older Delphi (Firmware version <5.1) a software update is required.

- Pack of 50 pcs - Code: **C001587**
- Package 100 pcs - Code: **C001588**



## Banana plugs

AISI304 Ø4 mm stainless steel connectors with rubber insulation suitable for kiln temperatures, available as spare parts for wood probe cables.

- Code: **C001483**





## Probes box

For correct operation of your controller, the probe holder panels and the cables inside the kiln must always be in perfect condition: dirt or damage can compromise the quality of the electrical insulation and distort the measurements.

- Panels complete with temperature probe (NTC) and cellulose clamp, with 3, 4 or 6 pairs of sockets for probe cables or with direct output of 2 or 4 probe cables are available as spare parts.
- The panels are supplied complete with high insulation cable (FEP) for connection to the amplifier (available lengths: from 5 to 30m - multiples of 5m).

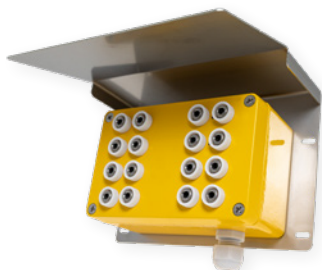


## Probe cables

Like the probe holder panels, the cables for the wood probes must be kept in perfect efficiency.

Deteriorated or damaged cables cannot be repaired (it is difficult for a normal insulator to guarantee sufficient insulation) and must be promptly replaced.

- Silicon or Teflon insulated cables are available, shielded or not, with single or double termination with banana plugs.  
*Lengths from 5 to 30m (multiples of 5m).*



## Probe box for HT cycles (Heat Treatment)

The aluminum probes box have been designed by Logica H&S to be durable over time. The insulating details, made of PTFE, ensure great reliability in use in kiln dryers even during the execution of heat treatment cycles (HT).



## Compact plate for probe box mounting

Plate made of stainless steel for fixing the boxes to the wall.

It is a compact model that can be requested as an alternative to the classic more protruding plates, equipped with a protective roof.

- Code: **C001668**

## RH/T SENSOR

The sensor allows you to use your MoisTxxx meter for measuring ambient humidity. In addition to the relative humidity and temperature values, the instrument also calculates and displays the wood equilibrium moisture (EMC). The accurate protection of the sensor also makes it ideal for use inside the kiln.

- Compatibility: **MoisTrue, MT10, MT20, MT30**
- Code: **C002836**



## HOLE LINERS FOR CONCRETE FLOORS

These elements are provided with a cap and a sliding gasket (to adapt perfectly to the depth of the hole) sealing the holes in which the moisture detection probes will subsequently be positioned.

The diameter of the hole required for their insertion is 14 mm.

- Compatibility: **MoisTrue, MT10, MT20, MT30**
- Code: **C002100** - aluminum liner length. 50mm
- Code: **C002101** - aluminum liner length. 100mm



## RH/T/EMC SENSOR

Accessory for MoisTrue/MoisTest for estimating the moisture of sawdust or wood chips, especially suitable for values lower than 20%. Connected to compatible meters, it must be inserted deep into the material to be measured. Stainless steel probe - length 30cm - Ø8mm

- Compatibility: **MoisTrue, MT10, MT20, MT30**
- Code: **C002989**



## SPF PROBE FOR SAWING MEASUREMENT

Accessory for resistance meter for estimating moisture of sawdust or wood chips, especially suitable for values higher than 15%.

Connected in place of the normal electrode holder, it must be inserted deep into the material to be measured, suitably compacted. SPF AISI304 probe - length 60cm - Ø12mm

- Compatibility: **MoisTrue / LG43**
- Code: **C001909**







## TEST BOX FOR PIN-TYPE METERS CALIBRATION CHECK

Compatibility: MoisTrue / LG43 + all control systems

- Code: **C001578** - (11.5% 25 ° C - Group 3)
- Code: **C000910** - (18.5% 25 ° C - Group 3)
- Code: **C000911** - (32.5% 25 ° C - Group 3)



## TEST BOX FOR CONTACT METERS CALIBRATION CHECK

Compatibility: MT10, MT20, MT30

- Code: **C003094**



## CONDUCTIVE RUBBER ELECTRODES FOR SURFACE MEASUREMENTS

Pair of AISI303 stainless steel electrodes fitted with conductive rubber for surface measurements.

These items do not damage the measured material in any way.

They are used with the Plastic Handle, simply by screwing them onto the instrument instead of electrodes.

- Compatibility: **MoisTrue / LG43** + Plastic Handle
- Code: **C001432**



## PERFORATION ELECTRODES FOR SURFACE MEASUREMENTS

Turned steel electrodes with very short (0.5mm) and sharp tip, suitable for measurements on thin materials (veneers, paper, leather) or for surface measurements. The short and sharp tip allows non-intrusive measurements in the materials, leaving almost imperceptible marks. Particularly suitable for use with Plastic Handle, they can also be installed on the electrode Hammer.

- Compatibility: **MoisTrue / LG43**
- Code: **C000548**

## INSULATED ELECTRODES

Compatible with our Pin-Type meters, they are made of treated steel. These electrodes have an extremely sharp tip that allows easy measurements even in depth.

**INSULATED VERSION:** The insulated stem allows the measurement of the correct in-depth moisture of the wood even in the presence of a moist surface layer (e.g. dew). Two different lengths are available in the catalog and can be used with the electrode Hammer or Plastic Handle.

- Compatibility: **MoisTrue / LG43**
- Code: **C001945** - 20pcs x 25mm
- Code: **C001946** - 20pcs x 40mm
- Code: **C002679** - ASSORTED SET 20pcs (10 x 25mm + 10 x 40mm)



## NOT INSULATED ELECTRODES

Compatible with our Pin-Type meters, they are made of treated steel. These electrodes have an extremely sharp tip that allows easy measurements even in depth.

**NOT INSULATED VERSION:** They can be used instead of the insulated ones in all cases where there is no wetter layer on the surface, guaranteeing savings on the purchase price and greater strength. Two different lengths are available in the catalog and can be used with the electrode Hammer or Plastic Handle.

- Compatibility: **MoisTrue / LG43**
- Code: **C002345** - ASSORTED SET 20pcs (10 x 25mm + 10 x 40mm)
- Code: **C002346** - 20pcs x 25mm
- Code: **C002347** - 20pcs x 40mm



## PLASTIC HANDLE FOR SURFACE MEASUREMENTS

Accessory for Pin-Type meters, consisting of a practical high-insulation handle and a series of turned steel electrodes with a thin tip and a penetration depth of 0.5mm. Useful for surface measurements on veneers or non-wood materials. It can also accommodate standard 40 or 60 mm electrodes.

- Compatibility: **MoisTrue / LG43**
- Code: **C000095** - 20pcs x 25mm





## CONNECTION CABLE FOR HAMMER AND PLASTIC HANDLE

Connection cable made with highly insulated cables and connectors, allows you to connect Handler or Hammer to the moisture meter ensuring reliable measurements.

- Compatibility: **MoisTrue / LG43**
- Code: **C000102**



## ELECTRODE HOLDER HAMMER PER MEASURES IN DEPTH

Accessory for Pin-Type meters, consisting of a powder-coated metal part with striking mass from a head in highly insulated plastic material.

The striking mass allows an easy insertion (and extraction) of the electrodes in the material to be measured.

- Weight: 1.5kg
- Compatibility: **MoisTrue / LG43**
- Code: **C001626**



## SPARE HEAD FOR HAMMER

If the plastic section of the hammer C001626 is damaged, it can be replaced individually. This product must necessarily be made of highly insulated plastic material, therefore it is more fragile than the remaining parts of the accessory. It is however possible to ensure a very long life by simply avoiding tightening the electrode locking nuts too hard and drilling guide holes for measurements on particularly hard materials or at very great depths.

- Compatibility: **MoisTrue / LG43**
- Code: **C000584**



## BioMASS METER

The bioMASS moisture measurement accessory can be used for an easy measurement of the moisture content in wood sawdust or, more generally, in all fine-grained biomasses. The gun allows you to compress the material to be measured in an easy and repeatable way, ensuring fast and accurate readings. Caution: The accessory set does not include the measuring tool.

- Compatibility: **MoisTrue / LG43**
- Code: **C003074**

## OPTIONAL CONNECTOR FOR MOISTUREMOUSE

The optional connector hooks onto the moisturemouse sensors and allows them to be connected to traditional kiln electrodes via a length of cable (standard lengths 1, 2, 5m) and is useful for leaving the sensor outside the stack if there is not enough space for the use of very thin strips (<20mm) or in case of receiving difficulties



## RECEIVING ANTENNA

Shockproof and waterproof antenna for receiving signals from MoistureMouse sensors.

Equipped with thread to be easily fixed to the stainless steel support C001885

Specifications:

- 433MHz + 3d stylus antenna
- SMA cable 2m long
- Code: **C002225**



## STAINLESS STEEL SUPPORT FOR ANTENNA

1 mm thick stainless steel support, without edges, designed by Logica H&S and made in Italy, specially designed for fixing the receiving antenna.

- Code: **C001885**



## HIGH TEMPERATURE BATTERY FOR CLIMATE DETECTION BOX LG36

Lithium battery 3.6V size AA (Li / SOCl<sub>2</sub>) 2Ah for Climate Detection Box LG36.

Resistant in environments with maximum temperatures up to 125°C. Each of these batteries allows over 2 years\* of measurements and can be easily replaced directly by the user. **WARNING: DO NOT use common AA batteries.** Ask Logica H&S assistance service for replacement batteries suitable for use in kiln dryers.

- Code: **C001685**

\* Battery life may vary based on device settings, ambient temperature and many other factors





## HIGH TEMPERATURE BATTERY FOR MOISTUREMOUSE

Lithium battery 3.6V size AA (Li / SOC12) 2Ah/c leads usable in the Moisture-Mouse meter. Resistant in environments with maximum temperatures up to 125°C. Each of these batteries allows over 2 years\* of measurements and can be easily replaced directly by the user. **WARNING: DO NOT use common AA batteries.** Ask Logica H&S assistance service for replacement batteries suitable for use in kiln dryers.

- Code: **C002126**

*\*Battery life may vary based on device settings, ambient temperature and many other factors*



## HIGH TEMPERATURE BATTERY PACK FOR WIRELESS WINDISK

Lithium battery pack 3.6V size AA (Li / SOC12) 2Ah for Windisk. Resistant in environments with maximum temperatures up to 125°C. Each of these batteries can be easily replaced directly by the user.\* **WARNING: DO NOT use common AA batteries.** Ask Logica H&S assistance service for replacement batteries suitable for use in kiln dryers.

- Code: **C002167**

*\*Battery life may vary based on device settings, ambient temperature and many other factors. To maximize the duration, remember to switch off WinDisk when not in use.*



## SELF-DRILLING STAINLESS STEEL ELECTRODES FOR LG36

Electrodes made of stainless steel, cross head, suitable for use with Moisture-Mouse after positioning with template C001657

- Code: **C002155** Electrode 4,8 x 16 mm (100pcs)
- Code: **C002156** Electrode 4,8 x 25 mm (100pcs)
- Code: **C002157** Electrode 4,8 x 45 mm (100pcs)



## DRILLING TEMPLATE FOR SELF-DRILLING ELECTRODES

This article made of stainless steel, was designed by Logica H&S to allow a simple and rapid positioning of the self-drilling electrodes in the material to be measured. With this tool and any electric screwdriver, in a few seconds it will be possible to insert the electrodes at the correct distance and at the optimal depth to be hooked by the MoistureMouse meter.

- Code: **C001657**







**LOGICA H&S SRL**  
**ELECTRONICS FOR WOOD PROCESSING**

*Product catalogue - Free Sample*

Via Jacopo Stellini 10, 33050  
Pavia di Udine (UD) - Italy  
+39 0432675602