

 **SK MACHINERY**

The number 1 planer/moulder



4 Side Planer
& Moulder

Complete moulder range for any production requirement

Outstanding features:

- * The panel is provided with graphics for motion indication. It's easily operated, safe and highly efficient.
- * The machine frame is one piece cast-iron piece from FC-25 tempered and rustproof treated.
- * The entire frame is CNC machined for maximum rigidity, stability and precision.
- * The fully safety enclosure serves as a chip guard and helps to reduce noise.
- * Chrome hardened table surface for machining hard & abrasively.
- * Individual motor to all spindles.
- * Pneumatic pressure loading to all feed rollers.
- * Built-in working light.
- * All dust hoods are centralized on the top of the machine which facilitates installation of flexible hoses.
- * CE regulation(optional).

Individual Motor for each spindle

Centralized spindle lubrication:

- * Central location of lubrication system is conveniently lubricated for all spindles.

Designed and modified to suit all woodworking business in UAE

Extra short distance between top and bottom horizontal spindle:

- * Close coupled with top and bottom spindles provides better control and accurate cutting performance.
- * The last bottom horizontal spindle accommodates gang rip saw.

Front adjustment lever of spindle and mechanical digital readout:

- * All adjustment levers for all spindle are located in front of the machine.
- * Levers layout confirm to human engineering theorem for convenient operation.
- * Mechanical digital readouts are fitted for each spindle giving accurate reading of spindle

Pneumatic Powered feed roller:

- * The feed rollers are transmitted by cardan shaft for extremely powerful and accurate feeding effect.
- * The last bed feed roller is also power driven by cardan shaft providing extremely smooth feeding performance for any workpiece.

OPTIONAL:

- * Short stock feed rollers.
- * Grooved table.
- * Automatic lubricator.
- * Programmable controller with 100 sets memory capacity.
- * Frequency inverter controlled feed speed.
- * High speed spindle.



SK Machinery
6 HEAD SPINDLE MOULDER MACHINE
3 PHASE 380 VOLTS / 50 HERTZ

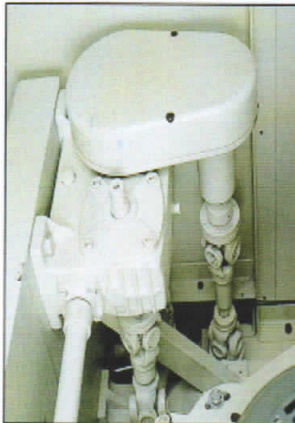
| MODEL | | KP6-260US |
|-----------------------|-----------------------------------|----------------------------|
| Moulding Capacity | Width | 260 mm |
| | Thickness | 125 mm |
| | Min. Length | 240 mm |
| Diameter of cutter | Bottom horizontal spindle | 100~150 mm |
| | Right vertical spindle | 100~180 mm |
| | Left vertical spindle | 100~180 mm |
| | Top horizontal spindle | 100~180 mm |
| | Top horizontal spindle | 100~180 mm |
| | Bottom horizontal spindle | 200 mm (with gang rip saw) |
| Spindle Diameter | | 50 mm |
| Spindle speed | | 6,000 RPM |
| Motor | Bottom horizontal spindle | 10 HP |
| | Right vertical spindle | 10 HP |
| | Left vertical spindle | 10 HP |
| | Top horizontal spindle | 10 HP |
| | Top horizontal spindle head no. 5 | 15 HP |
| | Bottom horizontal spindle | 10 HP |
| | Feed drive | 7.5 HP |
| | Elevation | 1/2 HP |
| Feed speed | | 6~24 M/Min |
| Feed roller | Dia. x I.D. | 140 x 35 mm |
| | Pressure | 6 Bar |
| Machine dimension(mm) | | 4100x2100x2100 |
| Packing dimension(mm) | | 4400x2300x2300 |
| N.W. (Kg) | | 6700 kgs |
| G.W. (Kg) | | 6650 KGS |

SHUN KUANG WOODWORKING MACHINERY
866, San Feng Rd., Feng Yuan, Taichung, Taiwan, R.O.C.
Tel: 886-4-25223475 Fax: 886-4-25273790



FLAT BELT DRIVE

The spindles are driven by high-quality flat belt for extremely stable power transmission without vibration and are ideal for high speed running.



POWERED TOP & TABLE ROLLERS

The top feed & table rollers are transmitted by chainless cardan shaft for absolutely powerful and accurate feed effect.

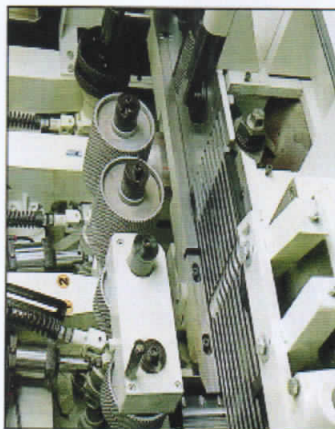


FEED MAGAZINE (OPTIONAL)

The feed magazine keeps stock moving continuously into the machine at any speed on the feed rollers. It provides labor saving and upgrade working efficiency.

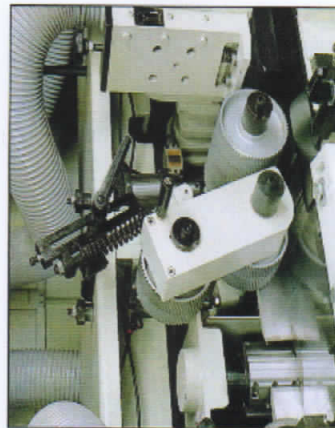
CAPACITY OF FEED MAGAZINE

Width: 25-200mm.
Thickness: 10-100mm.
Length: 320mm or more.



GROOVED TABLE (OPTIONAL)

Designed for short or warped stocks feed smoothly and straightly. The grooved table ensures stocks traverse in the accurate path for precise cutting.



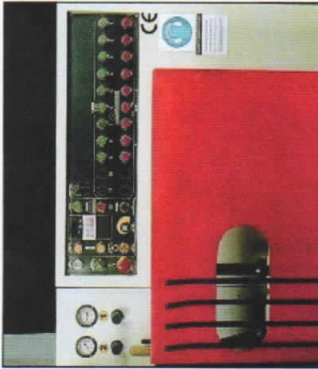
SHORT STOCK FEED ROLLER (OPTIONAL)

The additional stock feed roller mounted oppositely the fenceside head allows for holding short stocks firmly. It avoids stock chattering and ensures high-quality cutting & can be lifted easily for conveniently change cutterhead on the fenceside spindle.



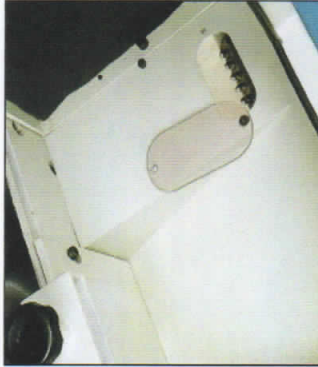
CUTTERHEAD SET-UP STAND (OPTIONAL)

The cutterhead set-up stand is optional for offering the operator conveniently and accurately calibrates each cutterhead. Thus assures that each one runs perfectly.



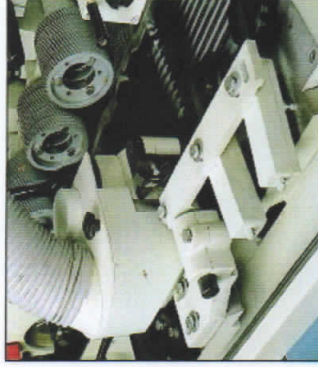
CONTROL PANEL

The main control panel includes all motion controls of the machine for convenient operations. A frequency inverter for variable speed from 5-45 M/min with speed display screen is optional.



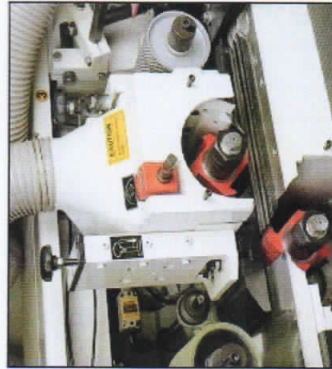
CENTRAL LUBRICATION

Central location of lubrication for all spindles is convenient and easy-maintenance.



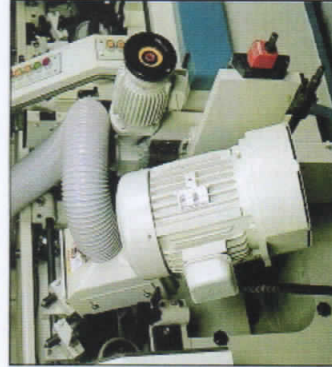
SYNCHRONIZED ADJUSTMENT FOR LEFT SPINDLE AND LATERAL PRESSURE ROLLERS

When adjusting the left spindle, the lateral pressures move along with the spindle, providing convenient and fast set-up for left spindle.



HEAVY PRESSURE ELEMENTS

BEFORE & AFTER THE TOP SPINDLE
Mounted in front & after the top spindle, the rigid chipbreaker & heavy-duty pressure shoes provide full support of workpiece for the best surface finish. They are also adjustable to different tooling diameter for easy adjustment of different cutting circles for reducing set-up time.



UNIVERSAL SPINDLE

A versatile universal spindle can be furnished on the outfeed of the machine. The universal spindle is powerful, elevated for convenient adjustment, allowing to cut with cutter or saw-blade for complicated profiles on the workpiece.



FRONT ADJUSTMENT LEVER OF SPINDLE AND MECHANICAL DIGITAL READOUT

- All adjustment levers for all spindles are located in front of the machine. Levers layout conform to human engineering theorem for convenient operation.
- Mechanical digital readouts are fitted for each spindle giving accurate reading of spindle adjustment.